



Welcome to

THE EUROPEAN SPACE AGENCY

Dr. Bettina Böhm

**Head of the Human Resources Department
ESA**

www.esa.int

The European Space Agency

Jobs and Careers

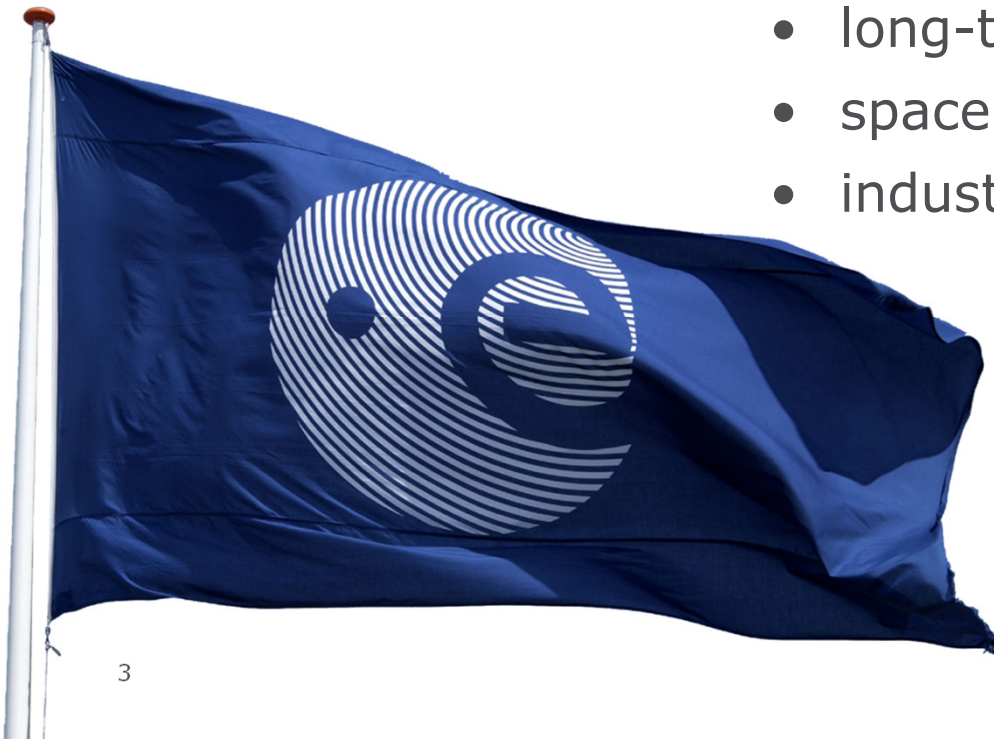
Entering ESA after University

“To provide for and promote, for exclusively peaceful purposes, cooperation among European states in **space research** and **technology** and their **space applications.**”

by elaborating & implementing

- long-term European space policy
- space activities & programmes
- industrial policy

- **Article 2 of
ESA Convention**



20 MEMBER STATES

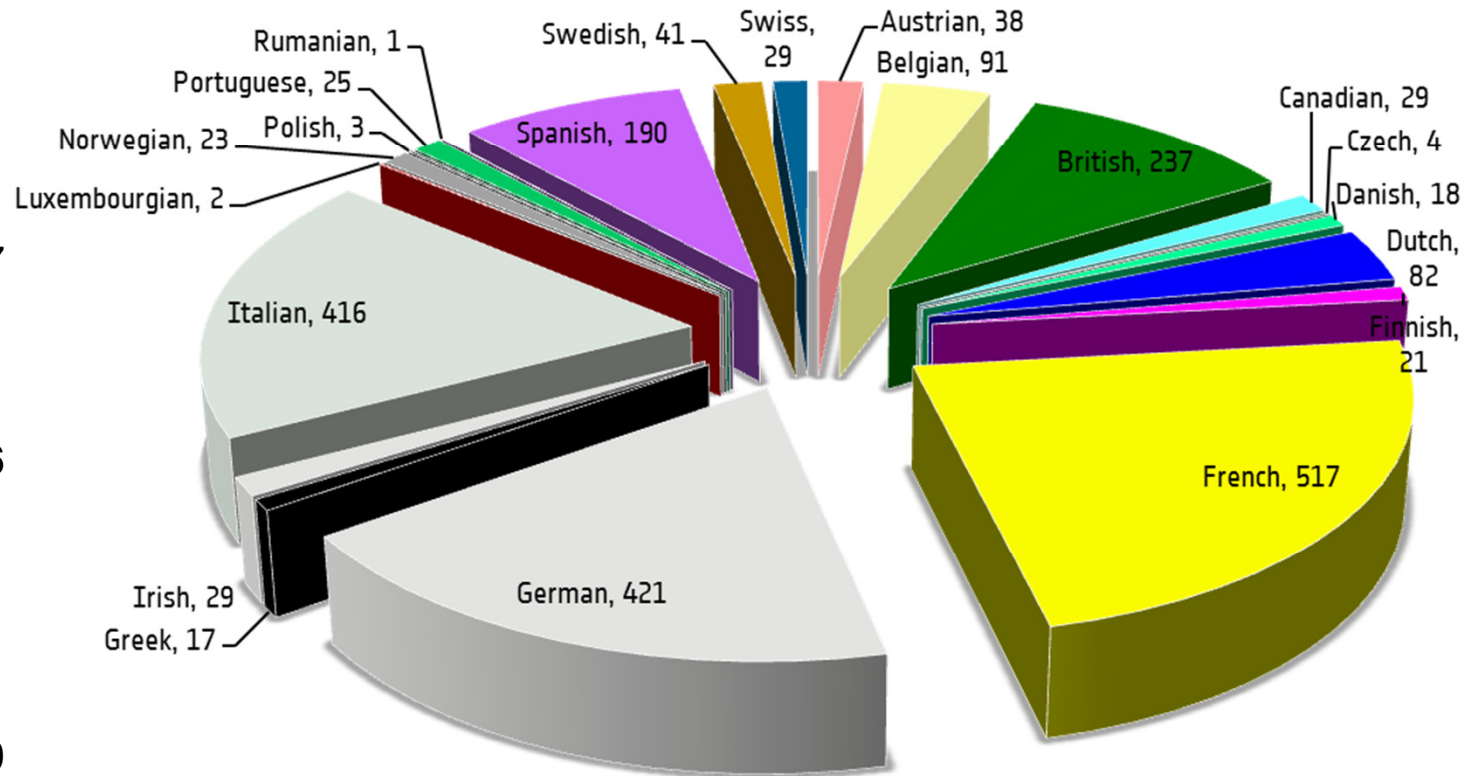
- **ESA has 20 Member States:** 18 states of the EU (AT, BE, CZ, DE, DK, ES, FI, FR, IT, GR, IE, LU, NL, PT, PL, RO, SE, UK) plus Norway and Switzerland.
- Eight other EU states have **Cooperation Agreements** with ESA: Estonia, Slovenia, Hungary, Cyprus, Latvia, Lithuania, Malta and the Slovak Republic. Bulgaria is negotiating a Cooperation Agreement.
- **Canada** takes part in some programmes under a Cooperation Agreement.



STAFF BY NATIONALITY IN 2013



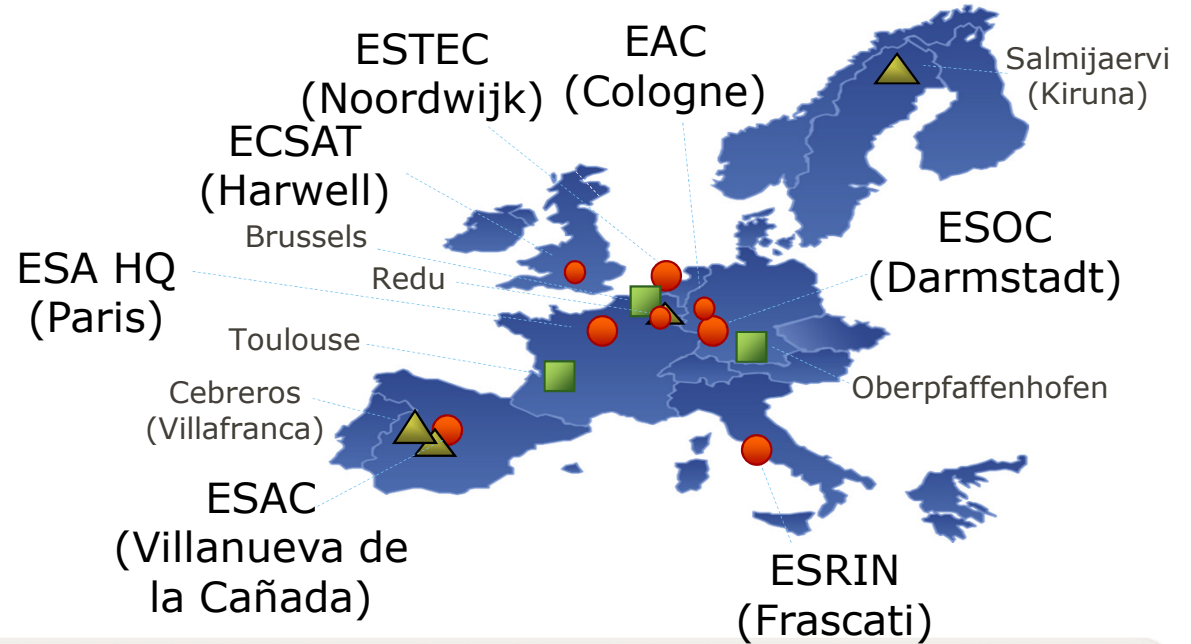
Nationality	N. of Staff
Austrian	38
Belgian	91
British	237
Canadian	29
Czech	4
Danish	18
Dutch	82
Finnish	21
French	517
German	421
Greek	17
Irish	29
Italian	416
Luxembourgian	2
Norwegian	23
Polish	3
Portuguese	25
Rumanian	1
Spanish	190
Swedish	41
Swiss	29
Grand Total	2234



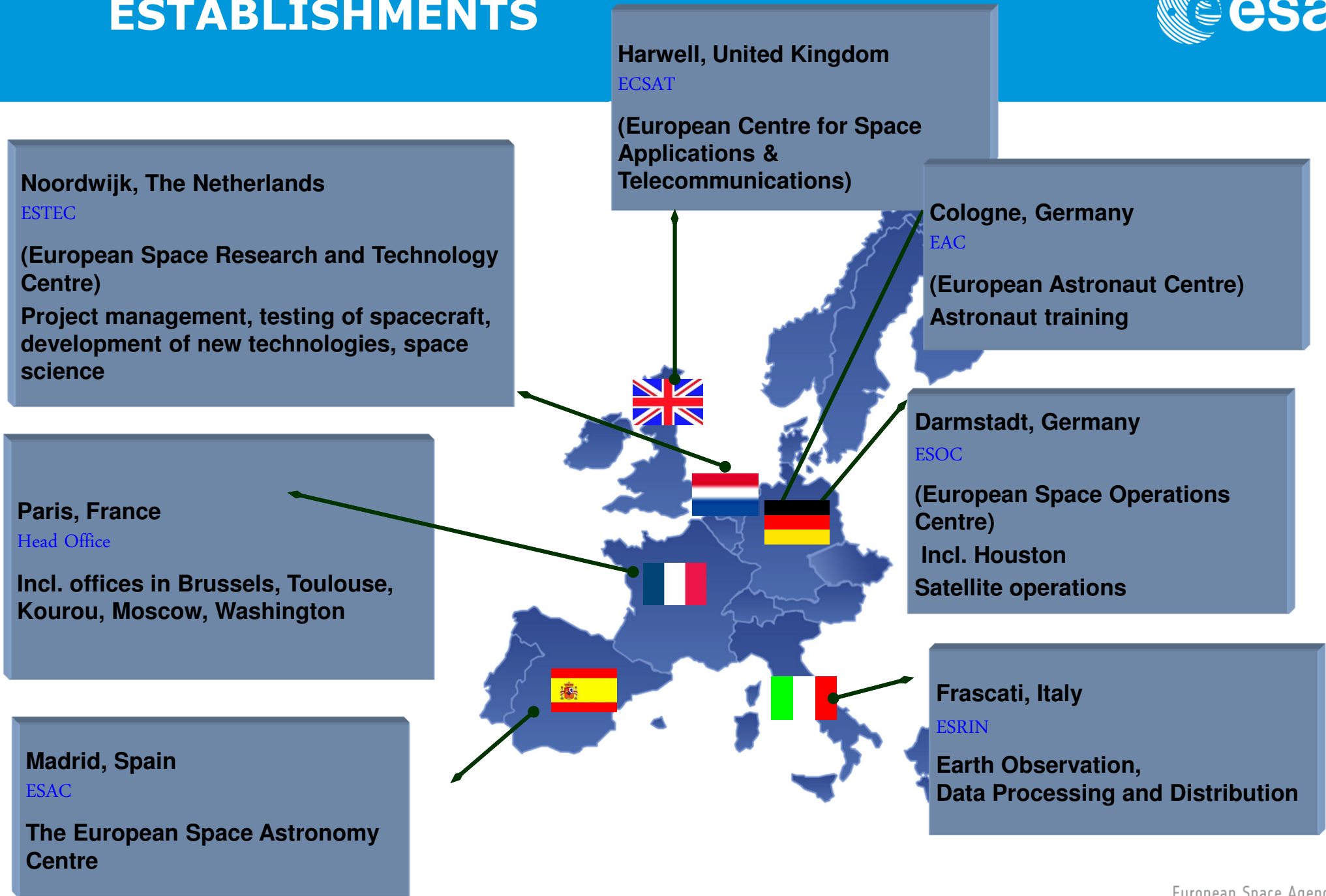
ESA'S LOCATIONS



- ESA sites/facilities
- Offices
- ▲ ESA ground stations



ESTABLISHMENTS



Space and Employment

In 2012, direct space industry employment has amounted to 35700 people (35 000 in 2010) and overall industrial turnover of €6.5 billion (source: ASD-Eurospace 2012)



Employment in space manufacturing in Europe
Source: Eurospace (2010) in The space economy at a glance 2011 (OECD)

Academic background and jobs in ESA



Job Sections /Discipline	R&D Project Support	Project Engineering	Operations Engineering	Exploitation
Aerospace Engineering	●	●	●	●
Astronomy / Astrophysics	●	●		●
Communications Engineering	●	●	●	●
Electrical Engineering	●	●	●	
Mathematics	●	●	●	
Mechanical Engineering	●	●		
Physics	●	●	●	●
Product Assurance Engineering		●	●	●
Software Engineering	●	●	●	●

- Power supply & conditioning
- Navigation
- Payload engineering
- Telecom systems/sub-systems
- Space mechanisms
- Optical Engineering
- Thermal
- Propulsion
- Product Assurance & Safety
- Components & Materials
- Systems Engineering
- SW Avionics
- Simulation AIV

- Internships
- Young Graduate Trainee (YGT) Programme
- Postdoc Research Fellowships

- Open for recently graduated young women and men from ESA Member States and cooperating states.
- Hands-on experience in the development and operation of space missions.
- Provides a rich personal experience of living and working in another country and in a diverse and international environment.
- Traineeship for one year, renewable once for a maximum of one additional year.
- App. 80 traineeship opportunities published each year. Average of 1700 applications.
- App. 2,200 € net salary.

- Offering a second year in industry.
- Open for YGTs who have shown excellent performance in first year in ESA.
- Selection criteria: critical competences, openness for mobility, gender and nationality representation.
- YGT works on project agreed by ESA and industry.

Secondments so far on the basis of agreements with:

- EADS Astrium (Friedrichshafen)
- REL Ltd (Oxford)
- Space Engineering Spa (Rome)
- EADS Astrium (Toulouse)

- Post-doctoral research fellowship programme.
- Open for scientists and engineers from ESA Member States and cooperating states.
- Offering the opportunity to carry out advanced research in a variety of disciplines related to space science, space applications and space technology.
- Candidates must have recently attained their doctorate degree.
- Two-years contract, which can be extended for a third years in exceptional cases.
- ESA hosts app. 50 fellows every year, thereof 18 in the Science Directorate.

- Open for Master degree students, preferably in their last or penultimate year.
- Opportunity to prepare their thesis.
- Open for students from ESA Member States and cooperating states.
- 3 to 6 months placements.
- Students are normally given one internship during their studies, however this can be split into two parts provided that the total duration does not exceed six months.
- Unpaid. Daily allowance for pocket expenses may be granted.
- Interns need to provide their own insurance and cover travel expenses.

www.esa.int/careers

- Early careers
 - Young Graduate Trainees
 - PhD & Post docs
 - Student placements

- + Job videos
- + Academic videos Space for...

- + Careers@ESA
- + World of ESA

- Services
 - Careers news
 - Subscribe to vacancies
 - Frequently asked questions
 - Business partners

ESA > About Us > Careers at ESA

→ A DAY IN THE LIFE...
A day in the life of a YGT

Archive

Search here

Vacancies

YGT Opportunities

Formula for success

ESA career facts

ESA publications

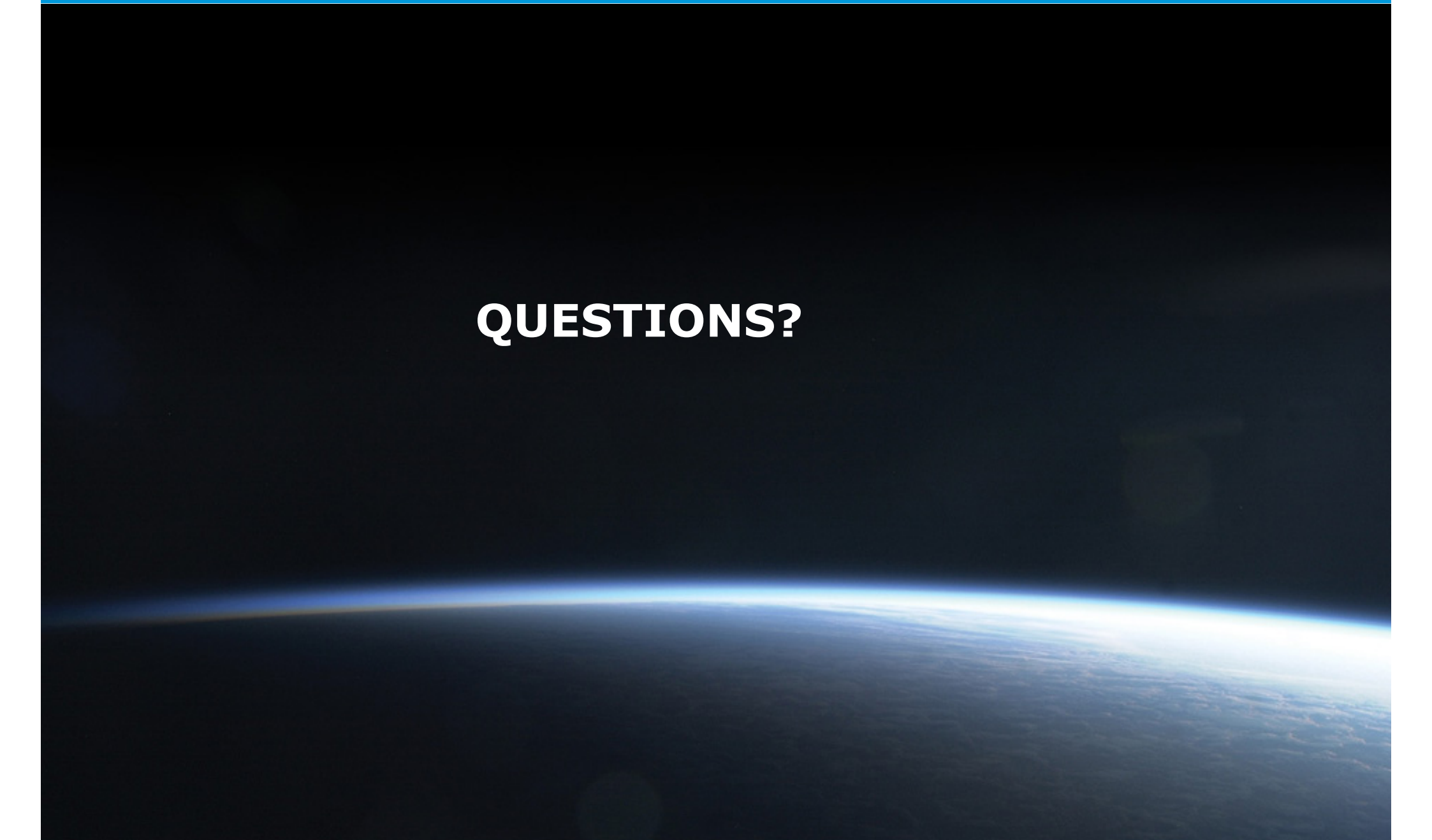
Winning teams

LATEST NEWS



Research Fellowship: astronaut post-mission rehabilitation

QUESTIONS?



ESA's Networking/Partnering Initiative (NPI) supports work carried out by universities and research institutes on advanced technologies with potential space applications, with the aim of fostering increased interaction between ESA, European universities, research and industry.

Proposals accepted by the Initiative are offered support in a number of ways:

- Co-funding – The NPI can co-fund research up to 50% or €30,000 per year for a doctorate degree or post-doctoral investigations
- Access to ESTEC laboratories: NPI participants are able to use ESTEC facilities for a minimum of six and a maximum of 12 months
- Technical support – NPI participants gain access to ESA experts with whom they can discuss proposal concepts and verify their potential for space applications
- Networking – NPI participants will be able to search for industrial partners for further cooperation and build 'innovation networks' through ESA links